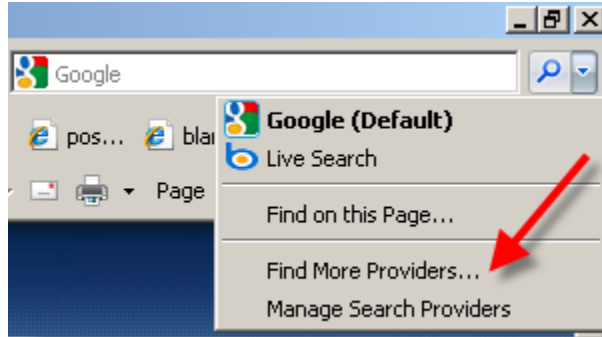


Lesson 4, Using Search Engines in IE8 and Find on Page



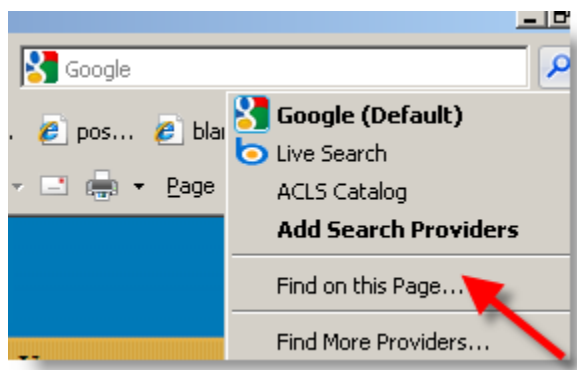
With IE8 you can have improved search functionality. The instant search box was introduced in IE7, but is now enhanced. You can use **Microsoft's Live Search Engine** or find other search providers by clicking on: **Find More Providers**. When you add new search providers, you can switch between them at the click of a button.

As you type your keywords, the search engine provides suggestions of related terms you might want to include – usually common phrases that other people have searched for. IE8 now includes visual suggestions as well. Also known as “instant search”, find-as-you type searching helps narrow your search by displaying relevant search suggestions as you type, without requiring you to press the **Enter** key.

This feature speeds up the search process because most of the time, you won't even have to type in the entire word or phrase you're looking for. Instant search will have already anticipated and suggested it – click on the best match immediately.

Find on Page

In IE8, the Find on Page feature has been integrated into the Instant Search box. Click the instant search box and then click: **Find on this Page**.



In the new toolbar that appears below the tabs, type in the search box: **videorecording**. All matches for videorecording are highlighted, and the first matching term is selected. If there are more matches, just click: **Next**. To close the toolbar, click: X at the beginning of the toolbar.

